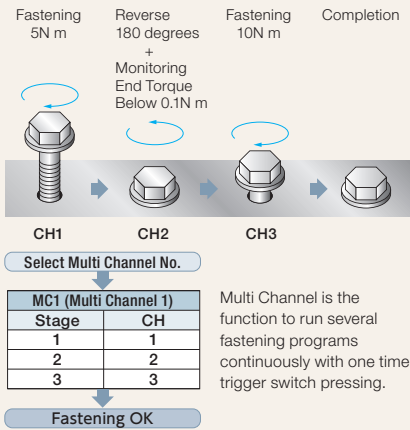


Battery Tool Handy 2000 cordless

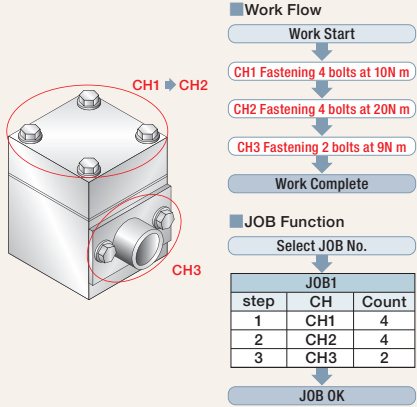
Channel/Multi Channel

Maximum of 99 fastening programs can be stored in the controller, which gives flexibility to assemble several areas with single tool.



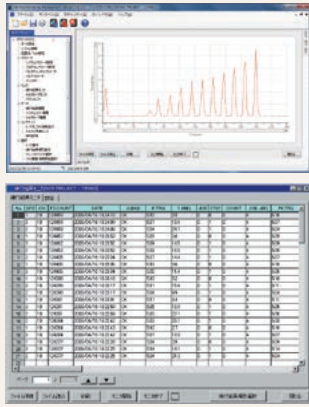
JOB Function

JOB is used to fasten multi bolts with multi fastening strategy in sequence. Up to 99 JOB can be programmed and stored in the controller, and up to 30 Steps can be programmed in 1 JOB.



Management Software

ESTIC's software is user friendly interface to edit fastening and system parameters. Various functions including fastening results monitor and torque curve monitor are in one package.



Tool Unit Basic Specifications

Type	Model	Drive Mode	Torque Range		Max.Speed (rpm)	Output Drive		Weight*3		Battery Type	Length		Distance from the center	
			(N m)	(ft lb)		(mm)	(inch)	(kg)	(lb)		(mm)	(inch)	(mm)	(inch)
Pistol Grip	EHC-R0005-PZ*	Pulse/Direct	1-5	0.7-3.7	1440	9.5	3/8	1.3	2.87	25.2V	217	8.54	23	0.91
	EHC-R0008-PZ*	Pulse/Direct	1.6-8	1.2-5.9	936	9.5	3/8	1.3	2.87	25.2V	217	8.54	23	0.91
	EHC-R0012-PZ*	Pulse/Direct	2.4-12	1.8-8.9	638	9.5	3/8	1.3	2.87	25.2V	217	8.54	23	0.91
	EHC-L0026-PZ*	Pulse Only	5.2-26	3.8-19.2	936	9.5	3/8	1.6	3.53	25.2V	241	9.49	23	0.91
Right Angle	EHC-R1030-AZ*	Direct Only	6-30	4.4-22.1	393	9.5*2	3/8*2	2	4.41	36V	557	21.93	17.2	0.68
	EHC-R1050-AZ*	Direct Only	10-50	7.4-36.9	215	9.5*2	3/8*2	2.3	5.07	36V	572	22.52	17.2	0.68
	EHC-R1065-AZ*	Direct Only	13-65	9.6-48.0	166	12.7*2	1/2*2	2.7	5.95	36V	604	23.78	21	0.83
	EHC-R1090-AZ*	Direct Only	18-90	13.3-66.4	117	12.7*2	1/2*2	3.2	7.05	36V	638	25.12	25.5	1

\* Code after PZ differs depending on the country 1: Japan, China, Europe, Brazil, Russia 2: USA, Canada

\*2 Code at the end of Tool Model differs depending on the anvil type No code: Anvil with Through hole (PP): Anvil with Pin plunger (BP): Anvil with Ball plunger

\*3 Weight does not include the battery

Battery

\*1 piece of Battery pack is included when 1 unit of Tool unit is purchased

Model	Voltage	Ampere-hour	Weight (kg)	Remarks
BPL-2515ES	DC25.2V	1.5Ah	0.54	for Pistol Grip
BPL-3620ES	DC36V	2.0Ah	0.68	for Right Angle

Battery Chargers

AC 100 ~ 240V  
Single Phase

Model	Suitable battery
BC0075G	BPL-2515ES
BC1475ES	BPL-2515ES / BPL-3620ES



Interface Units

AC 100 ~ 240V  
Single Phase

Model	Fieldbus (Options)	USBPort	DC24V Port
EHC-IF10-Z*	—	—	—
EHC-IF20-Z*	x*2	x	x



\* Code after PZ differs depending on the country  
1: Japan, China, Europe, Brazil, Russia  
2: USA, Canada

\*2 DeviceNet, PROFIBUS, CC-Link, Ethernet/IP, Profinet

Please download CAD data through <https://www.estic2.com/caddata/>.



ESTIC CORPORATION

With us, the Future [www.estic.co.jp](http://www.estic.co.jp)

Head Office & Osaka Sales Office  
International Department  
2-5-9 Hashibahigashino-cho, Moriguchi-shi, Osaka, 570-0031 Japan  
Phone: +81-6-6993-8855 Fax: +81-6-6993-8881  
E-mail: [int\\_dep@estic.co.jp](mailto:int_dep@estic.co.jp)  
[osaka\\_office@estic.co.jp](mailto:osaka_office@estic.co.jp)

Tokyo Sales Office  
2F Shinyokohama Bousei Bldg., 3-20-12 Shin-Yokohama, Kouhoku-ku, Yokohama-shi, Kanagawa Pref. 222-0033, Japan  
Phone: +81-45-474-3036 Fax: +81-45-474-3037  
E-mail: [tokyo\\_office@estic.co.jp](mailto:tokyo_office@estic.co.jp)

Chubu Sales Office  
Yamahichi Higashioakazaki Bldg. 2F, 19-13, Kawabata, Myodaiji-cho, Okazaki-city, Aichi, 444-0864 Japan  
Phone: +81-564-66-0510 Fax: +81-564-66-0515  
E-mail: [chubu\\_office@estic.co.jp](mailto:chubu_office@estic.co.jp)

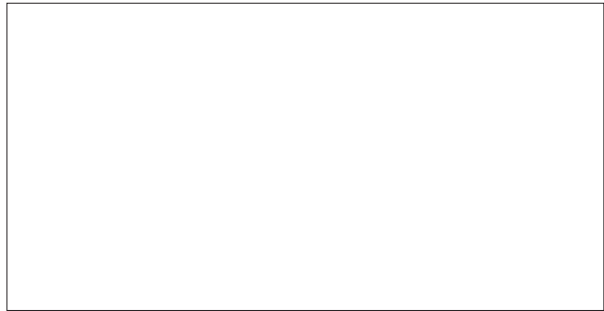
SUBSIDIARIES

SHANGHAI ESTIC CO., LTD.  
No. 6, 51 Gate, 1159 Lane, Kangqiao East Road, Pudong, Shanghai, 201315 China  
Phone: +86-21-6813-0333 Fax: +86-21-6813-0777  
E-mail: [ecc@estic.cn](mailto:ecc@estic.cn)

ESTIC (THAILAND) CO., LTD.  
19 Naradhiwas Rajanakin Road, Chong Nonsi, Yannawa, Bangkok, 10120, Thailand  
Phone: +66-2-678-0171 Fax: +66-2-678-0173  
E-mail: [sales@estic.co.th](mailto:sales@estic.co.th)

ESTIC AMERICA, INC.  
1895 Airport Exchange Blvd, Suite 220, Erlanger, Kentucky 41018 U.S.A.  
Phone: +1-859-746-8800 Fax: +1-859-746-8777  
E-mail: [support@estic-america.com](mailto:support@estic-america.com)

- The colors of the products may slightly differ from those of the actual products, which is inevitable in printing.
- The specifications and designs of the products may be changed without prior notice.



This catalog uses vegetable oil ink.

The contents of the catalog are as of August, 2016.



With us, the Future

Right Angle type,  
Now available on  
Battery Tool

Battery Tool

Pistol Grip / Right Angle

Handy 2000 cordless

Transducerized Electric Handheld Nutrunner



# World's first electric pulse handheld tool brings you evolution in assembly

ESTIC makes a change for manufacturing with a new generation handheld tool

## Pistol Grip

### Front Light

High brightness LED helps to work in the dim work environment.



### Reverse Switch

Just one push to change fastening direction.

### Trigger Switch

Smooth operation with soft start function assignable.

### Grip

### 25v 1.5Ah Li-Ion Battery

Adopted High Output, Light-weight Li-Ion Battery

Charging time: 60 minutes\*

Cycles per full charge: 1000 bolts on hard joint

\*When the battery is charged by BC1475ES

### Brushless Servo Motor

### LED backlight LCD

### Tool Status LED

Tool status is indicated by 7 different colors for easy recognition by the users. Default is set as Green: OK Yellow: notOK Blue: CW Purple: CCW And other status can be displayed in various ways.

### LED Color Indicator



Fastening direction



Fastening OK



Reverse direction



Fastening notOK (High)



Fastening notOK (Low)

## Right Angle

### Torque Transducer

Strain gauge transducer is adopted. High performance is guaranteed by 8 gauges structure and Auto cancel function for disturbance.

### Tool Status LED

### Grip

Fit-to-hand ergonomically designed rubber handle grip.

### Wireless Communication Technology

Estic Wireless Technology ( EWT ) is world's standard IEEE802.15.4/Zigbee embedded wireless technology to meet the requirements of quick startup, low current consumption, long distance communication.

### Brushless Servo Motor

High accuracy, high speed response brushless servo motor guarantees high quality fastening. Rotating speed and torque output are not affected by battery balance. Resolver is adopted for angle and speed control.

### LED backlight LCD

Items below are displayed on LCD  
Valid Channel  
Batch Count  
Torque and Angle  
Judge  
Battery Charge  
Wireless Reception  
Fastening NG number  
System Error number



### 36v 2.0Ah Li-Ion Battery

Charging time: 90 minutes

## Features

### High fastening accuracy

Direct mode: 3 Sigma X-Bar  $\leq \pm 3\%$  (Full Scale)

Pulse mode: 3 Sigma X-Bar  $\leq \pm 5\%$  (Full Scale)

Right Angle

### Tool Capability

Tool performance test is examined with ISO5393 complied testing equipment.

### Self-diagnosis system check

Transducer and circuit board have self-diagnosis function to keep the system running in good condition.

### Traceability (Data storage)

Tool Unit stores

Fastening result: Max. 30,000 records

Torque Curve: OK 5, notOK 10

System Error: 50 records

Networking can be built through I/F unit which has Ethernet, RS-232C port with various protocols such as Open Protocol, Chrysler PFCS, Global Pokayoke

### Process Control

Various functions are available on Handy 2000 Cordless system to keep your assembly process functional.

Multi fastening strategies on one tool

Channel, Multi Channel, JOB function, Batch Count

Various monitoring functions

Seizing, Re-hit, Self-tapping, zone monitor

Various fastening methods

Torque control, Angle control, Torque and/or Angle control

Internal PLC function

and more...

### Pulse Drive Mode (Patented technology)

Pulse drive mode is ESTIC's patented technology which greatly reduces reaction force. ESTIC launched the first electric pulse handheld tool in 2007 with corded handheld tool, and now this technology is available on the new battery tool. Pulse Drive Technology brings you both accuracy and productivity for your assembly works.

Patent (U.S.A)	US7,770,658 B2	US6,680,595 B2	Patent (Japan)	5094952
				4837498
				4699316
				4484447
				3456949

\* Pistol Grip Tool only

### Networking

Ethernet x 1 port  
RS-232C x 1 port  
Barcode scanner  
Management Software  
Protocols  
Open Protocol  
Chrysler PFCS  
Global Pokayoke

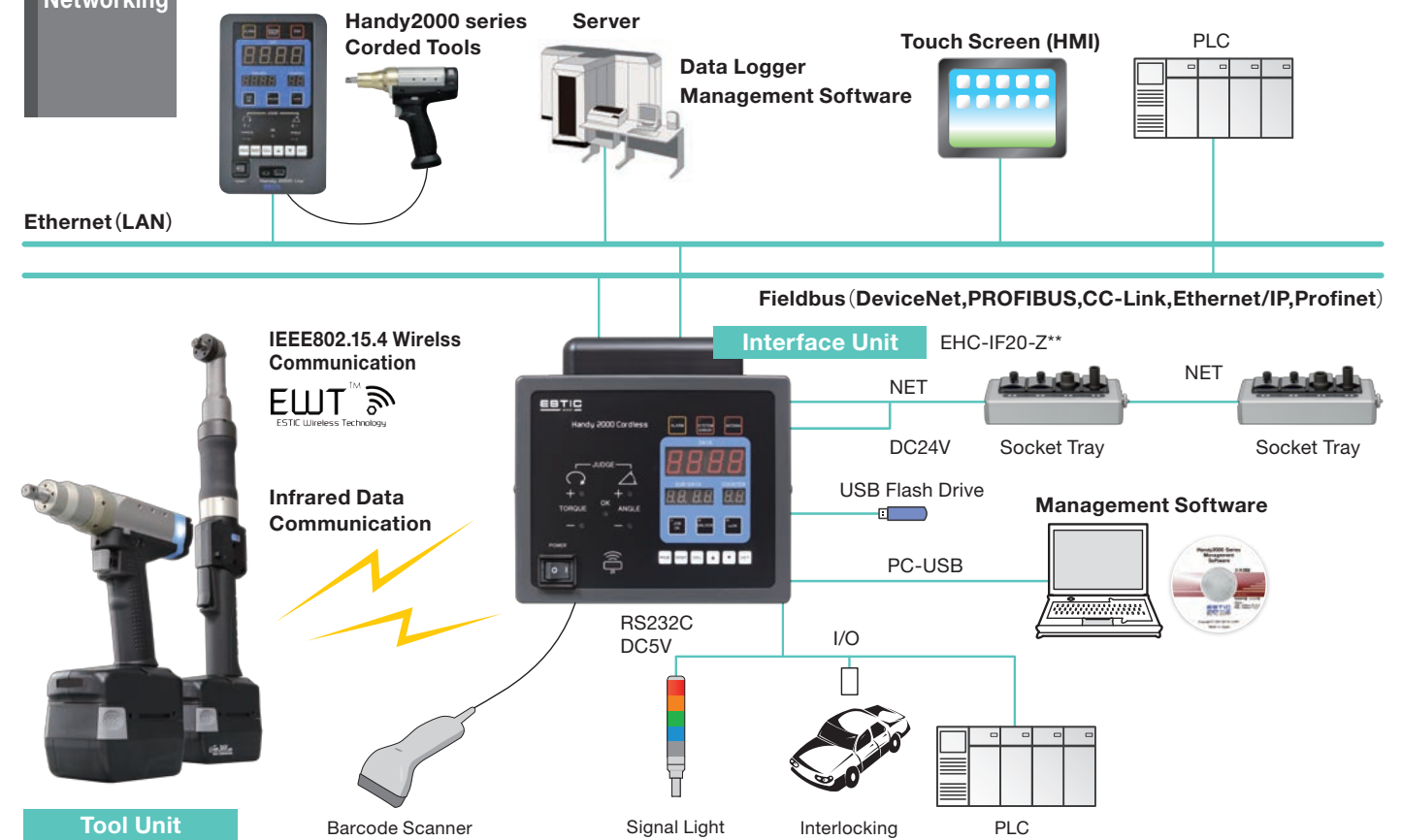


## Interface Unit

### Infrared Data Communication

Sending a program file between Tool Unit and Interface Unit can be made through infrared without the two units being connected.

## Networking



Connection between Tool Unit and Interface Unit is 1 to 1